

Anti-GPC3 hIgG1 Antibody(Codrituzumab)

Product information

GM-28751AB-10	10 µg
GM-28751AB-100	100 µg
GM-28751AB-1000	1 mg

Antibody Information

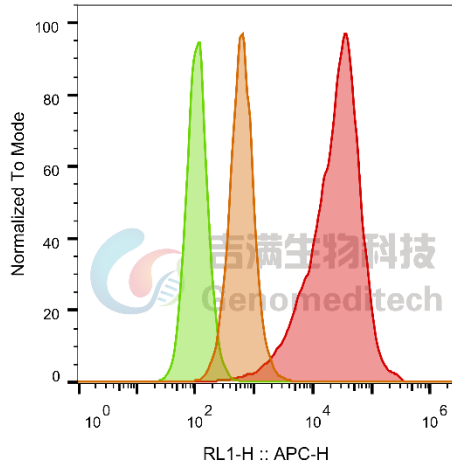
Species Reactivity	Human
Clone	Codrituzumab
Source/Isotype	Monoclonal Human IgG1 /k
Application	Flow Cytometry
Specificity	Detects GPC3
Gene	GPC3
Other Names	DGSX, GTR2-2, MXR7, OCI-5, SDYS, SGB, SGBS, SGBS1
Gene ID	2719
Background	<p>The protein core of GPC3 consists of two subunits, where the N-terminal subunit has a size of ~40 kDa and the C-terminal subunit is ~30 kDa. Six glypicans (GPC1-6) have been identified in mammals. Cell surface heparan sulfate proteoglycans are composed of a membrane-associated protein core substituted with a variable number of heparan sulfate chains. Members of the glypican-related integral membrane proteoglycan family (GRIPS) contain a core protein anchored to the cytoplasmic membrane via a glycosyl phosphatidylinositol linkage. These proteins may play a role in the control of cell division and growth regulation. GPC3 has been found to regulate Wnt/β-catenin and Yap signaling pathways. GPC3 interacts with both Wnt and frizzled (FZD) to form a complex and triggers downstream signaling. The core protein of GPC3 may serve as a co-receptor or a receiver for Wnt. A cysteine-rich domain at the N-lobe of GPC3 has been identified as a hydrophobic groove that interacts with Wnt3a. Blocking the Wnt binding domain on GPC3 using the HN3 single domain antibody can inhibit Wnt activation. Wnt also recognizes a heparan sulfate structure on GPC3, which contains IdoA2S and GlcNS6S, and that the 3-O-sulfation in GlcNS6S3S significantly enhances the binding of Wnt to heparan sulfate. GPC3 also modulates Yap signaling. It might interact with FAT1 on the cell surface</p>
Storage	Store at 2-8°C short term (1-2 weeks). Store at ≤ -20°C long term.Avoid repeated freeze-thaw.
Formulation	Phosphate-buffered solution, pH 7.2.
Endotoxin	< 1 EU/mg, determined by LAL gel clotting assay

Version:3.1 Revision Date:12/29/2023

Data Examples

Flow cytometry

H_GPC3 HEK-293 Cell Line (Catalog # GM-C15633) was stained with Anti-GPC3 hlgG1 Antibody(Codrituzumab) (Catalog # GM-28751AB) or isotype control antibody, followed by anti-Human IgG APC-conjugated Secondary Antibody.



SampleID	Geometric Mean : RL1-H
HEK-293 anti-GPC3+APC-2nd Ab	617
HEK-293 H_GPC3 H_IgG+APC-2nd Ab	109
HEK-293 H_GPC3 anti-GPC3+APC-2nd Ab	22489

Fig 1. FACS